

DAILY RESEARCH, 11 AGUSTUS 2020

PT PROFINDO SEKURITAS INDONESIA

**GD PERMATA KUNINGAN LT 19
JL KUNINGAN MULIA KAV 9C GUNTUR SETIABUDI JAKARTA SELATAN 12980**

TELP +62 21 8378 0888

EMAIL : CUSTOMERSERVICE@PROFINDO.COM

WWW.PROFINDO.COM | PROCLICK.PROFINDO.COM

MARKET MOVERS



Bursa saham AS ditutup menguat didorong perintah eksekutif President Trump terkait stimulus untuk pemulihan ekonomi. **DOW +1.30%, S&P +0.27%, NASDAQ -0.39%**

Bursa saham Eropa ditutup menguat setelah rilis data aktivitas industri di China menguat pertanda mulai perlahan terjadi pemulihan Ekonomi. **Indeks DAX +0.10%, FTSE +0.31%, CAC +0.41%**

Bursa Saham Asia dibuka kompak menguat setelah President Trump mengeluarkan kebijakan baru terkait stimulus untuk mendorong pemulihan ekonomi. **Hang Seng -0.63%, KOSPI +0.98%, Nikkei +1.29%**

Harga minyak mentah dunia menguat setelah data penyebaran virus corona di AS melambat. Harga emas melemah setelah penguatan Dollar AS terkait stimulus fiscal untuk pemulihan ekonomi. **WTI -0.70%, Brent Oil +0.29%, Gold +0.35%.**

IHSG pada perdagangan hari ini diperkirakan akan **BULLISH** dengan Range pergerakan **5119-5187** dengan saham-saham yang dapat diperhatikan : **BFIN MAIN ITMG PTSN MTDL AGRO**

MARET DATA

AMERIKA

DOW 30	27,791.44	+357.96	+1.30%
S&P 500	3,360.47	+9.19	+0.27%
NASDAQ	10,968.36	-42.63	-0.39%

EUROPE

DAX	12,687.53	+12.65	+0.10%
FTSE 100	6,050.59	+18.41	+0.31%
CAC 40	4,909.51	+19.99	+0.41%

ASIA

SHANGHAI	3,379.25	+0.00	+0.00%
HANGSENG	24,377.43	-154.19	-0.63%
SET	1,322.01	-2.39	-0.18%
KOSPI	2,409.79	+23.41	+0.98%
JCI	5,157.83	+13.94	+0.27%
NIKKEI	22,618.50	+288.56	+1.29%
ASX	6,155.10	+44.90	+0.73%

COMMODITIES

GOLD	2,016.10	-14.20	-0.70%
WTI OIL	42.09	+0.15	+0.36%
BRENT OIL	45.05	+0.13	+0.29%
COAL	54.30	-0.30	-0.55%
PALM OIL	2886	-16	-0.55%
TINS	17,747.50	-37.50	-0.21%
NICKEL	14,190.00	-35.00	-0.25%

EVENT & ECONOMIC CALENDER



ECONOMIC CALENDER :

INDONESIA

100820 CURRENT ACCOUNT Q2
110820 RETAIL SALES YoY (JUN)

GLOBAL

100820 CHINA INFLATION RATE YoY (JUL)
CHINA PPI YoY (JUL)
US JOBS OPENING (JUN)
110820 JAPAN CURRENT ACCOUNT (JUN)
JAPAN BANK LENDING YoY (JUL)
US PPI MoM (JUL)
US CORE PPI YoY (JUL)
120820 US API CRUDE OIL CHANGE
GBP TRADE BALANCE (JUN)
GBP GDP GROWTH RATE YoY (Q2)
GBP MANUFACTURING PRODUCTIONS (JUN)
EUROPE INDUSTRIAL PRODUCTION (JUN)
US CORE INFLATION
CHINA FDI (YTD) JUL
130820 JAPAN PPI MoM (JUL)
GERMANY INFLATION RATE YoY (JUL)
SPAIN INFLATION RATE YoY (JUL)
US JOBS CLAIMS
140820 CHINA INDUSTRIAL PRODUCTION YoY (JUL)
CHINA RETAIL SALES YoY (JUL)
CHINA UNEMPLOYMENT RATE YoY (JUL)
KOREA EXPORT IMPORT YoY (JUL)
FRANCE INFLATION RATE (JUL)
EUROPE GDP GROWTH Q2
EUROPE TRADE BALANCE (JUN)
US RETAIL SALES MoM (JUL)
US MANUFACTURING PRODUCTIONS YoY (JUL)

CORPORATE ACTION :

DEVIDEN

100820 TPMA RP 23.5 (CUM 1008, PAYMENT 0309)
SLIS RP 0.75 (CUM 1008, PAYMENT 0309)
IFII RP 2 (CUM 1008, PAYMENT 0209)
CTRA RP 8 (CUM 1008, PAYMENT 0309)
130820 SMBR RP 0.62007 (CUM 1308, PAYMENT 0409)
ACES RP 18.1 (CUM 1308, PAYMENT 0409)

RUPS

100820 PTSN OPMS INPC ECII BESS ASJT
110820 RISE RDTX PORT MARK KPIG BMTR APLI
120820 TNCA SMRA SMMT SCMA OCAP MREI MPOW MOLI HRTA HERO GEMS
FAST EMTK BWPT BBLD AKSI
130820 WICO TARA SDRA PTIS MORE OKAS LMSH LION LEAD JAST HOTL GSMF
DEWA CSIS BHAT BAYU ALTO ALDO
140820 YPAS WOOD TBLA SWAT SONA RALS PYFA PTSP MIRA MICE MGNA MFIN
GJTL GGRP FREN CBMF BUDI BTEK BKDP BEST ALKA

IPO

100820 SGER – PT SUMBER GLOBAL ENERGY TBK RP 108

RIGTH ISSUE

IMJS RATIO 1:2 RP 230 (CUM 1008, TRADING PERIOD 1408-2508)

JAKARTA COMPOSITE INDEX



PREVIOUS 7 AGUSTUS 2020

CLOSING	5157.834	+0.271%
TRANSACTION	IDR 7.239 TRILLION	
FOREIGN NETT	IDR 477 BIO (SELL)	

PREDICTION 10 AGUSTUS 2020

BULLISH
RANGE 5119-5187

BULLISH HARAMI
STOCHASTIC : UPTREND
MACD : HISTOGRAM NEGATIF MENGECIL DAN NETRAL

TECHNICAL RECOMENDATION



BFIN – PT BFI FINANCE INDONESIA TBK

CLOSING 10/8/2020 RP 318 (+12%)

BUY

TARGET PRICE 450

STOPLOSS < 278

BREAK OUT TRIANGLE

STOCHASTIC : UPTREND

MACD : HISTOGRAM POSITIF DAN UPTREND

TECHNICAL RECOMENDATION



MAIN – PT MALINDO FEEDMILL TBK

CLOSING 7/8/2020 RP 3190 (+11.9%)

BUT

TARGET PRICE 4350

STOPLOSS < 2900

WHITE SPINNING

STOCHASTIC : UPTREND

**MACD : HISTOGRAM NEGATIF MENGECIL DAN
BERSIAP GOLDEN CROSS**

TECHNICAL RECOMENDATION



ITMG – PT INDO TAMBANGRAYA MEGAH TBK

CLOSING 10/8/2020 RP 8575 (+9.2%)

BUY

TARGET PRICE 11200

STOPLOSS < 8350

BREAK OUT TRIANGLE

STOCHASTIC : UPTREND

MACD : HISTOGRAM POSITIF DAN UPTREND

TECHNICAL RECOMENDATION



PTSN – PT SAT NUSAPERSADA TBK

CLOSING 10/8/2020 Rp 254 (+9.5%)

BUY

TARGET PRICE 306

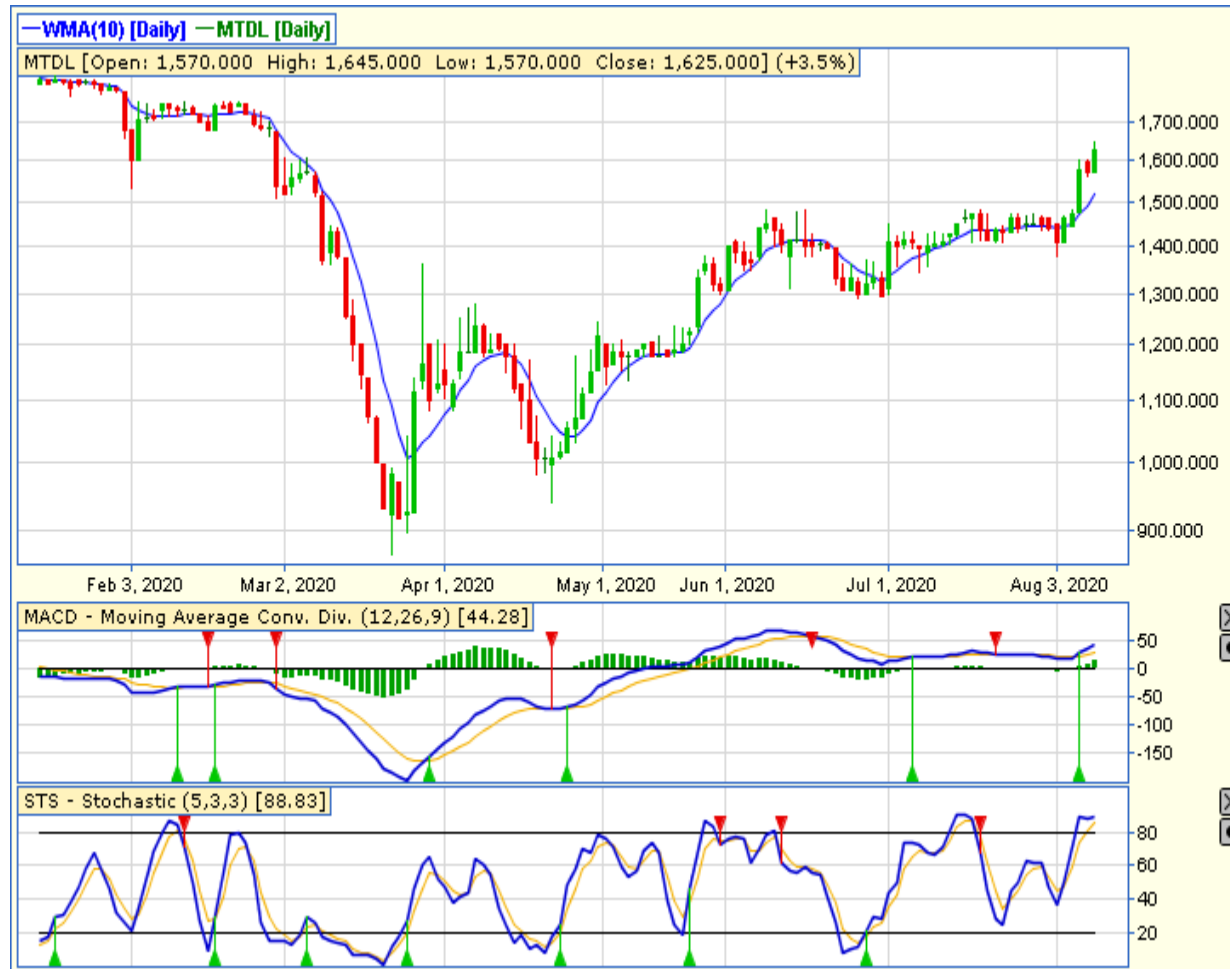
STOPLOSS < 228

BREAK OUT RISING WEDGE

STOCHASTIC : UPTREND

MACD : HISTOGRAM POSITIF DAN UPTREND

TECHNICAL RECOMENDATION



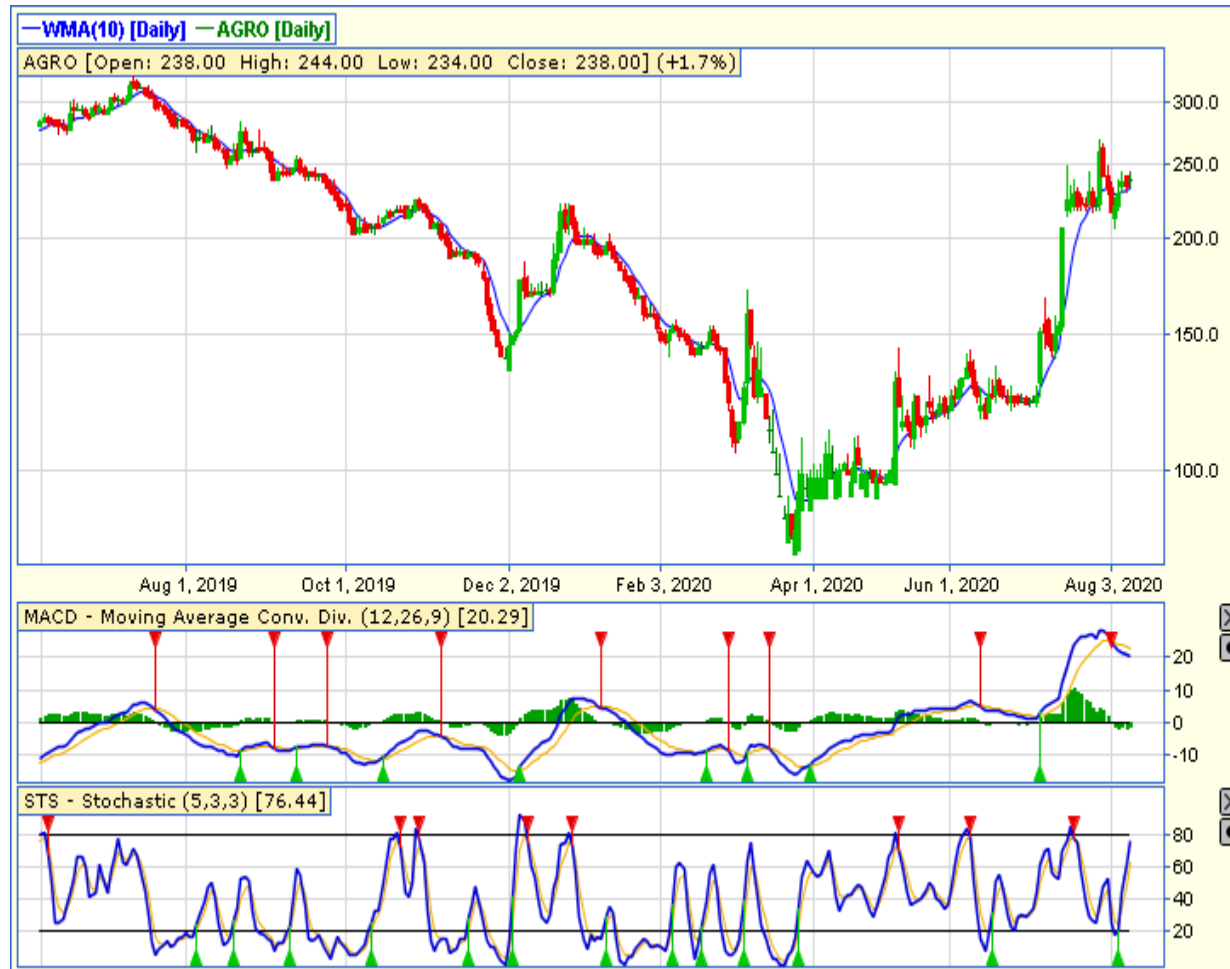
MTDL – PT METRODATA ELECTRONICS TBK

CLOSING 10/8/2020 RP 1625 (+3.5%)

**SELL ON STRENGTH
TAKE PTOFIT 1750**

**RISING WEDGE
STOCHASTIC : UPTREND
MACD : HISTOGRAM POSITIF DAN UPTREND**

TECHNICAL RECOMENDATION



AGRO – PT BRI AGRONIAGA TBK

CLOSING 10/8/2020 RP 238 (+1.7%)

BUY

TARGET PRICE 320

STOPLOSS < 230

CUP & HANDLE

STOCHASTIC : UPTREND

MACD : HISTOGRAM NEGATIF MENGECEIL DAN
NETRAL

RESEARCH TEAM



YULIANA

**RESEARCH ANALYST &
CORPORATE FINANCE**



DIMAS WP PRATAMA, CSA

TECHNICAL ANALYST

EQUITY CAPITAL MARKET TEAM



JESSIE JAMES

HEAD OF EQUITY SALES



PRASETYO NUGROHO

HEAD OF DEALING ROOM



GABRIELLA PRATIWY

HEAD OF ONLINE TRADING